

# THE SIGNATURE

REALITY  
Of Limassol  
luxury living

## Experience the beating heart **OF LIMASSOL**

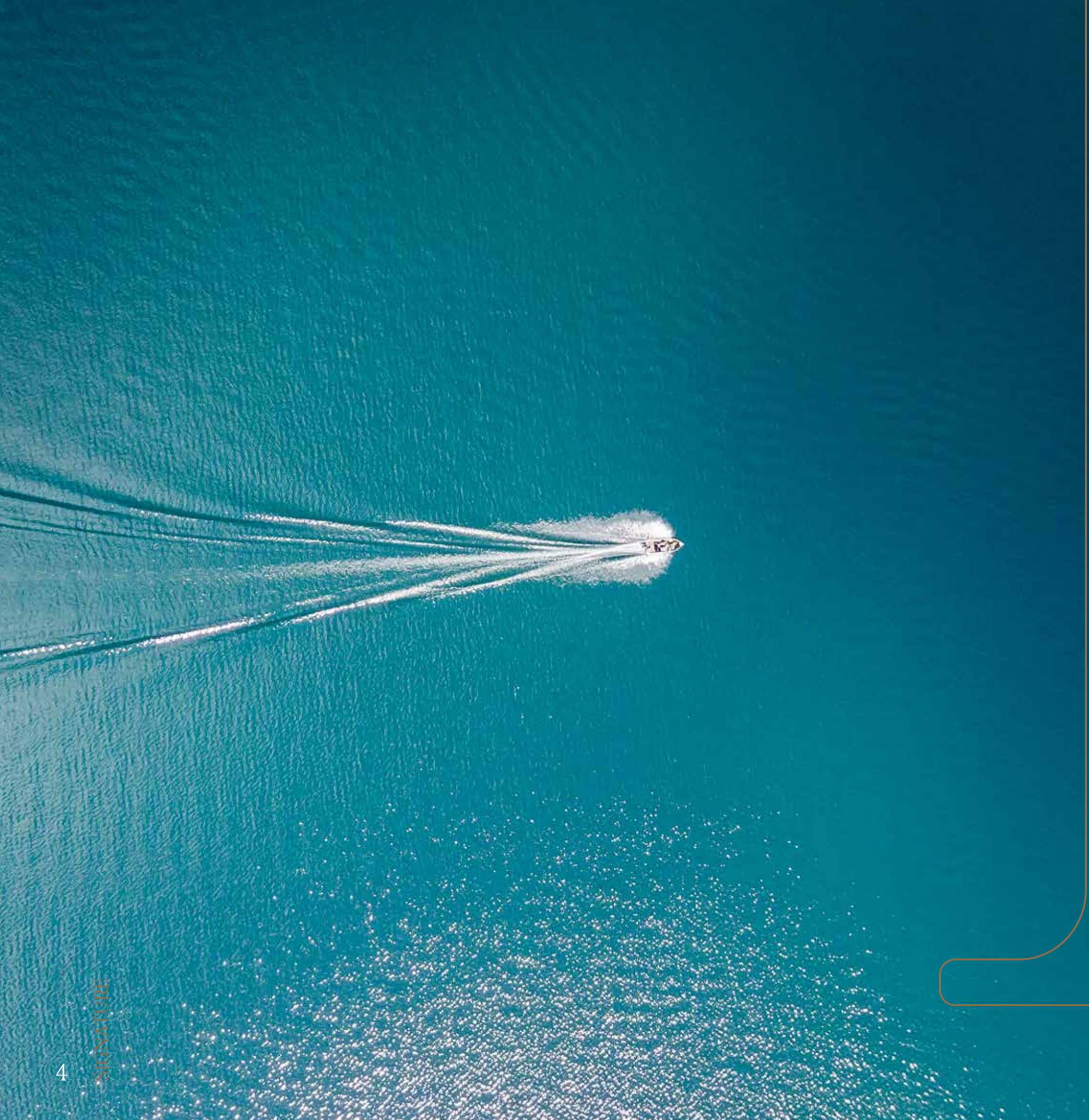
**L**imassol is a city that exudes coastal luxury, where residents can indulge in a truly premium lifestyle.

Dip your toes into its many sandy Blue Flag beaches. Explore the backdrop of evergreen mountains. Get caught up in the buzz of its bustling business hub, or simply enjoy the colorful, multicultural aesthetic that has made the city so famous.

**W**hatever your desire, there is no better place to realize your Mediterranean dream.

The Signature allows you to take this concept of island living to a whole new level. Its idyllic location, just steps from Limassol's azure blue coastline, makes it the epicenter of five-star luxury hotels, designer boutiques, first-rate restaurants and cafés, and a world-class superyacht marina a stone's throw away.





As the birthplace of Aphrodite, the Greek goddess of love, Cyprus is an island that embodies the essence of joie de vivre. Blessed with year-round sunshine, warm hospitality, and a seamless blend of traditional charm, modern facilities, and a wealth of natural beauty, Cyprus is a rich tapestry of nature, culture, and history, striking the perfect balance between work and leisure.

## The Island of **THE GODS**

The buzzing city of Limassol, the fastest developing and second largest on the island, is renowned for its vibrant atmosphere as well as its thriving commercial center. Picturesque mountain villages, an endless azure blue coastline, archaeological wonders and stylish, contemporary facilities come together to entice everyone, from the business professional to the carefree traveler and the tightknit family unit.





## INTERNATIONAL AIRPORTS

✈ Larnaka Airport - 40 mins / 57.5 km

✈ Pafos Airport - 45 mins / 68 km

### ENTERTAINMENT & LEISURE

Limassol Town Centre

Limassol Marina

Limassol Port

Limassol Mall

Molos Park

Municipal Gardens / Zoo

Cinema

Cyprus Sailing Club

### CULTURE

Amathus Archaeological site

Limassol Castle

Limassol Archaeological Museum

Municipal Art Gallery

Theatre







## Gaze upon the endless **BLUE**

**S**tart your every morning with the sun creeping over the Mediterranean, its pale, daybreak hues seeping into the sky as its rays begin to sparkle across the waves.

Breathe it in. Savor it. For it is wholly yours.

A view like no other, where the sea merges seamlessly with the horizon, a myriad of blues combining in a way that calms the eye and nourishes the soul.

**J**ust below The Signature Residences lies the evergreen Dasoudi Park. Lush green trees dot the sandy beach all the way down the coastline, with pathways weaving in and around the forested space to create the ultimate sanctuary for being truly at one with nature, right in your backyard.



# Welcome to **THE SIGNATURE**

The privilege of a central commercial center  
and the pleasure of beachside living come  
together in harmony to create the luxury high-rise world  
of The Signature.

## Where **EXQUISITE** meets **FUNCTIONAL**

Featuring retail and office space and 12 floors  
of residences, each component is exquisitely  
designed and expertly crafted to allow uninterrupted sea  
views, with the sapphire blue waters acting as a picture-  
perfect backdrop against a striking façade of ultra-  
modern elegance and luxury.





# YOUR own private sanctuary

An infinity pool glitters by the deck on the second floor, its glass front offering unhindered views as you take a refreshing plunge with the whole city at your feet.

Spend the entire day there, sipping a drink and relaxing on the sundeck. After all, what better way to enjoy the horizon than in the comfort and privacy of your own home, with everything you could possibly need right at your fingertips.

The perfect ambience for soothing contemplation and ultimate relaxation.







## The warmth of home, **THE COMFORTS OF A WORLD- CLASS HOTEL**

From the minute you step into the elegant Lobby, beautifully illuminated by the hidden lighting that twinkles on the gleaming surfaces of the designer marble floors and walls, you will feel you have arrived at home. Sophisticated and stylish, yet warm and welcoming, The Signature boasts a Lobby like no other.



Greeted by the smiling face of our 24-hour Concierge, residents will find that their every need is met, with impeccable service delivered by a highly-skilled professional team who are on hand to assist with the most minute of queries.





The Signature offers world-class facilities and services within a stylish yet professional atmosphere that is ideal for busy residents seeking a stress-free space where they will feel at home.

From building features to special services, residents can enjoy:

- 24-Hour Concierge Services
- 24-Hour Security
- Private Underground Parking Areas
- Spacious Reception and Elegant Lobby Area
- Residents' Swimming Pool
- Relaxing Area
- Children's Play Area
- Secure In-house Vaults with Safety Deposit Boxes
- Sky Terraces and Gardens
- Hotel-style Services
- Residents' Lounge

EVERYTHING at your fingertips





As far as  
the eye can **SEE**

The crown jewel of The Signature is its opulent penthouse, set atop the 12 floors and overlooking the entire skyline of Limassol and the Mediterranean Sea beyond. From this elevated oasis, residents can enjoy access to their very own private terrace, where they can soak up sunshine and bask in the uninterrupted vistas of sea and sky.







Stylish designer bedrooms provide a tranquil haven, thoughtfully decorated with muted tones that give a sense of warmth, while the kitchen and living areas are bright and spacious, allowing for happy gatherings of friends and family, as well as cozy evenings curled up on the sofa.

The 1, 2, and 3 bedroom apartments and penthouse **ARE THE EMBODIMENT** of contemporary interior design.

Top quality building materials are used throughout, and each residence is carefully finished to the highest of standards, boasting top-of-the-line appliances and technologies.

They feature comfortable, open-plan living areas flanked by expansive windows that bring the outside in and serve up beautiful views and a refreshing sea breeze.



Accented by deluxe touches of contemporary interior design, the residences are expertly crafted, featuring the finest marble and parquet floors and elegant Italian furniture of premium quality.





# The Residences: **LUXURY LIVING**

Combining premium aesthetics with elevated comfort and high functionality, the residences of The Signature are constructed with generous proportions, and embody the very best in luxury island living.



Large floor to ceiling windows allow an abundance of natural light to stream in, with the sapphire blue of the Mediterranean creating the perfect milieu against the exceptional design and high-spec functionality of the interiors.



# THE SIGNATURE: Revolutionizing Island Living

Better  
living  
experience

The Signature's luxury apartments and penthouse, designed by some of the world's most innovative designers and architects, come together to create a space that is unsurpassed in both luxury and quality.





“A thing  
is **of**  
beauty  
a joy  
**forever.**”

John Keats



A luxury high rise comprising retail and office space on the ground and mezzanine floors, and 12 floors of one, two, three, and four-bedroom residences, including a penthouse, all overlooking the azure blue waters of the Mediterranean.

Its ideal location in a bustling hotspot just across from the Blue Flag Sandy Beach of Dasoudi makes it perfect for both shops and offices looking to be in the middle of the action, as well as for residents who wish to fully indulge in all the perks of island living, with a host of amenities at their fingertips.



## MASTER PLAN

Main entrance

Sports area  
Playground

Parking area

Lobby

Residential complex

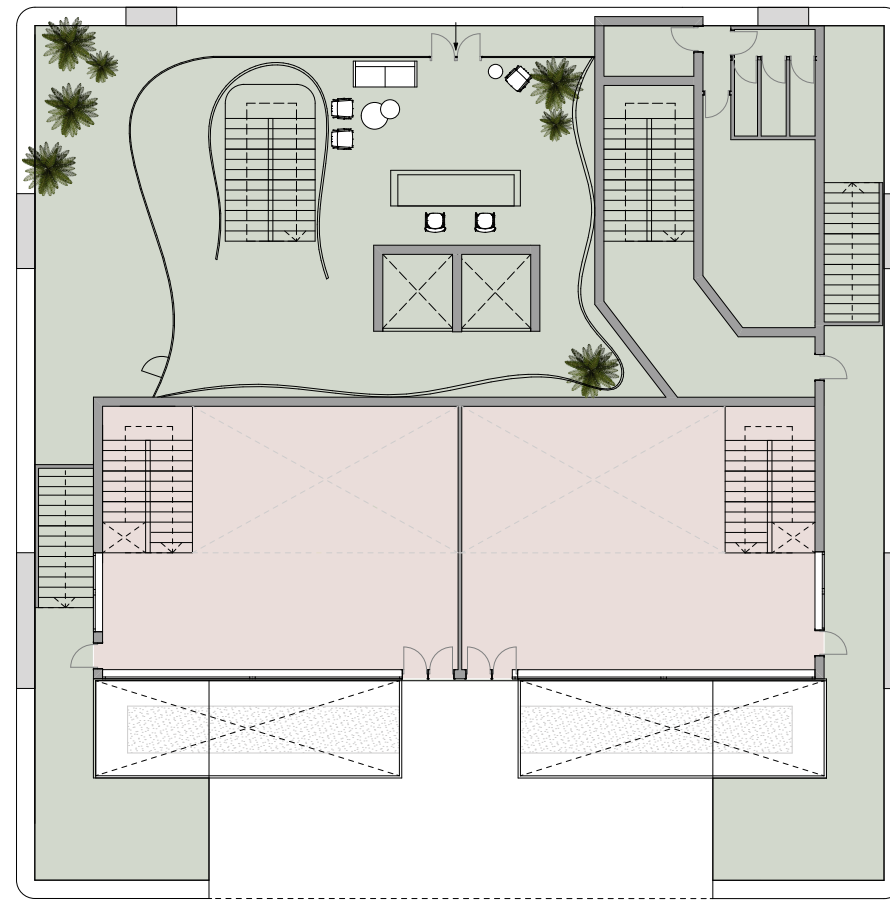
Garden

First line

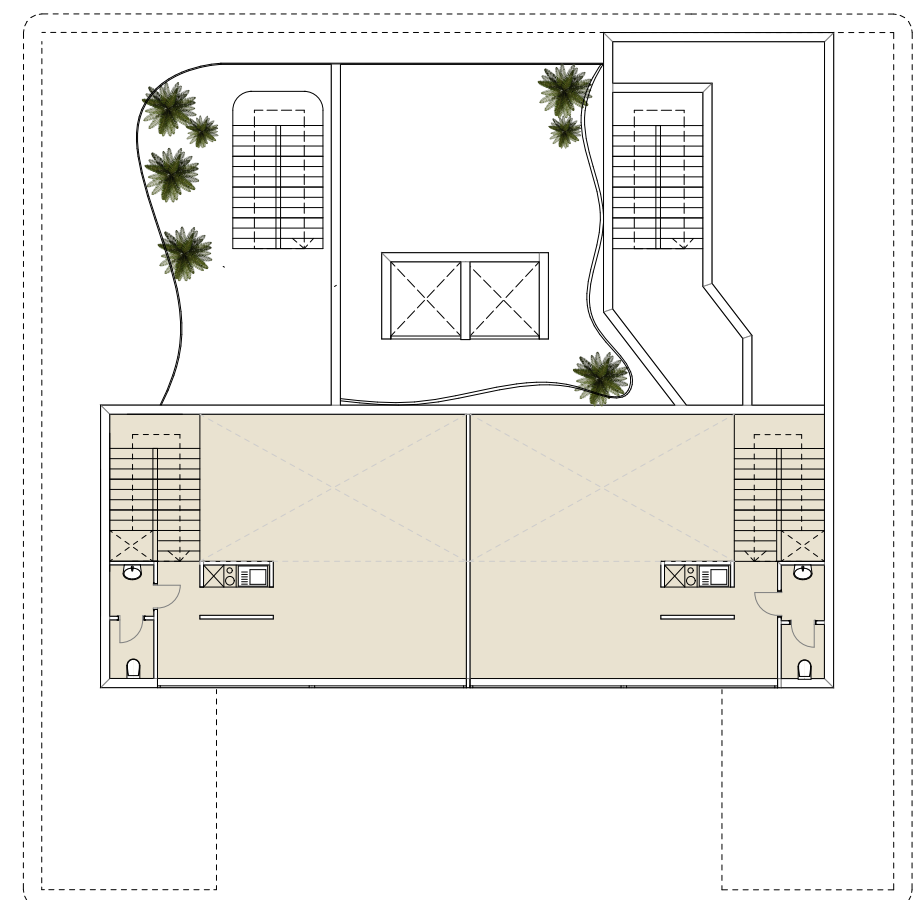




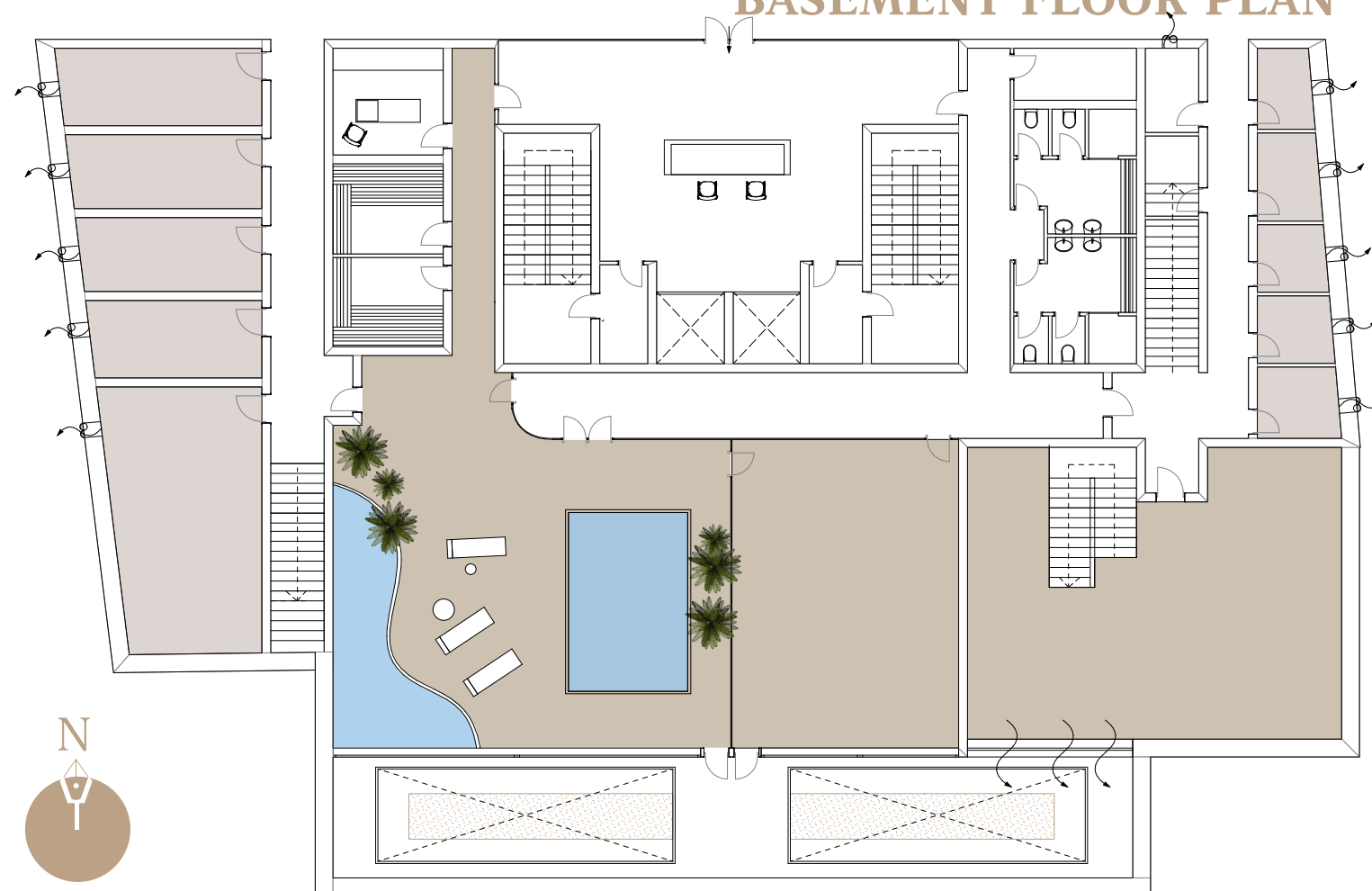
# GROUND FLOOR PLAN



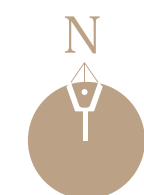
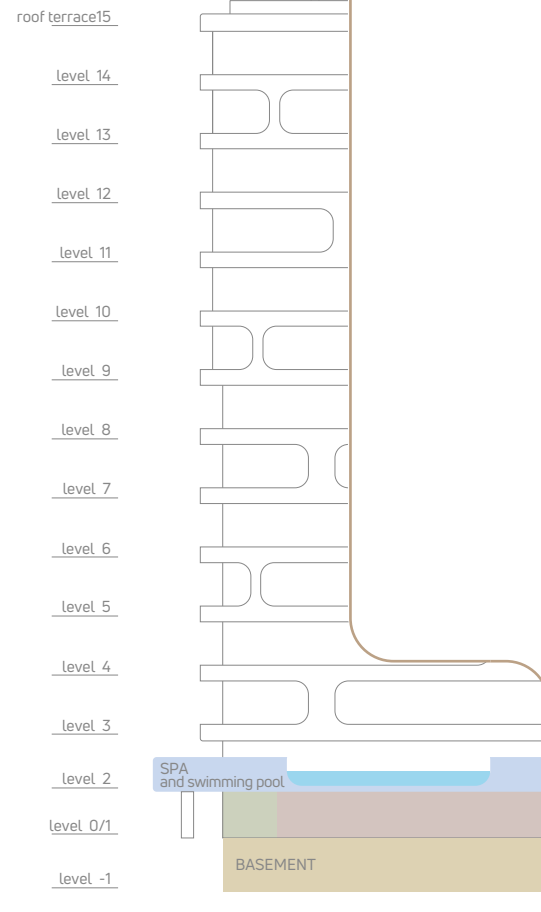
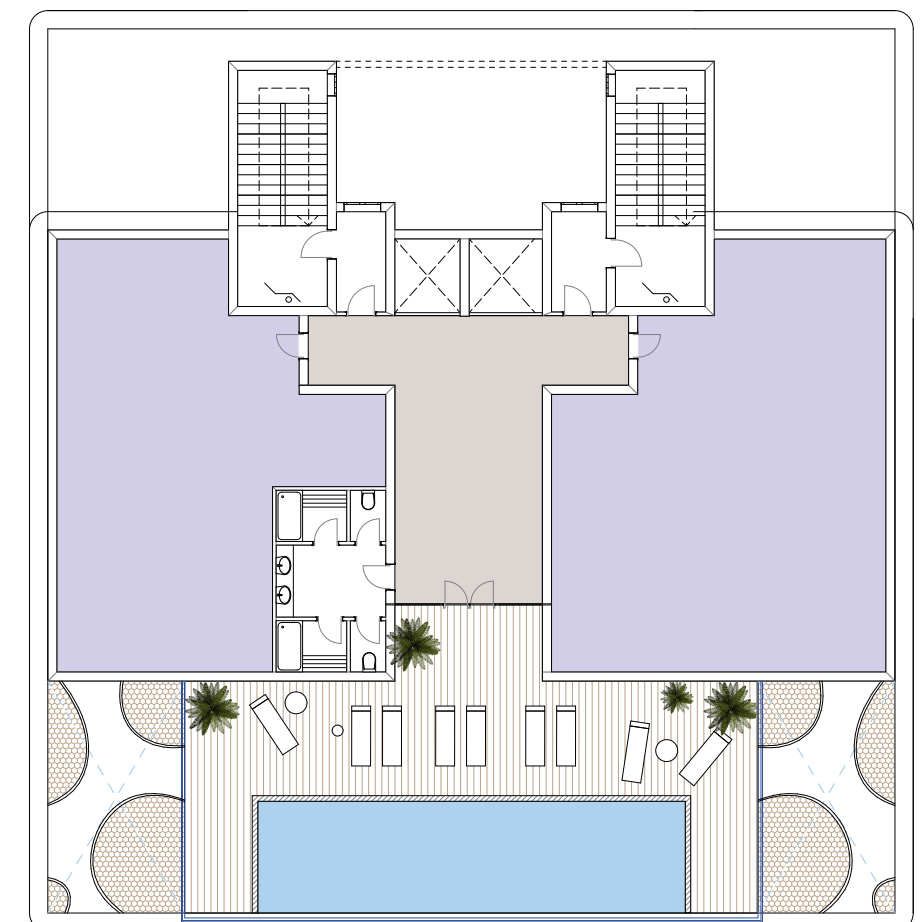
# FIRST FLOOR PLAN



# BASEMENT FLOOR PLAN



# SPA and SWIMMING POOL PLAN





roof terrace 15

level 14

level 13

level 12

level 11

level 10

level 9

level 8

level 7

level 6

level 5

level 4

level 3

level 2

level 0/1

level -1

SPA  
and swimming pool

BASEMENT

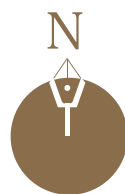
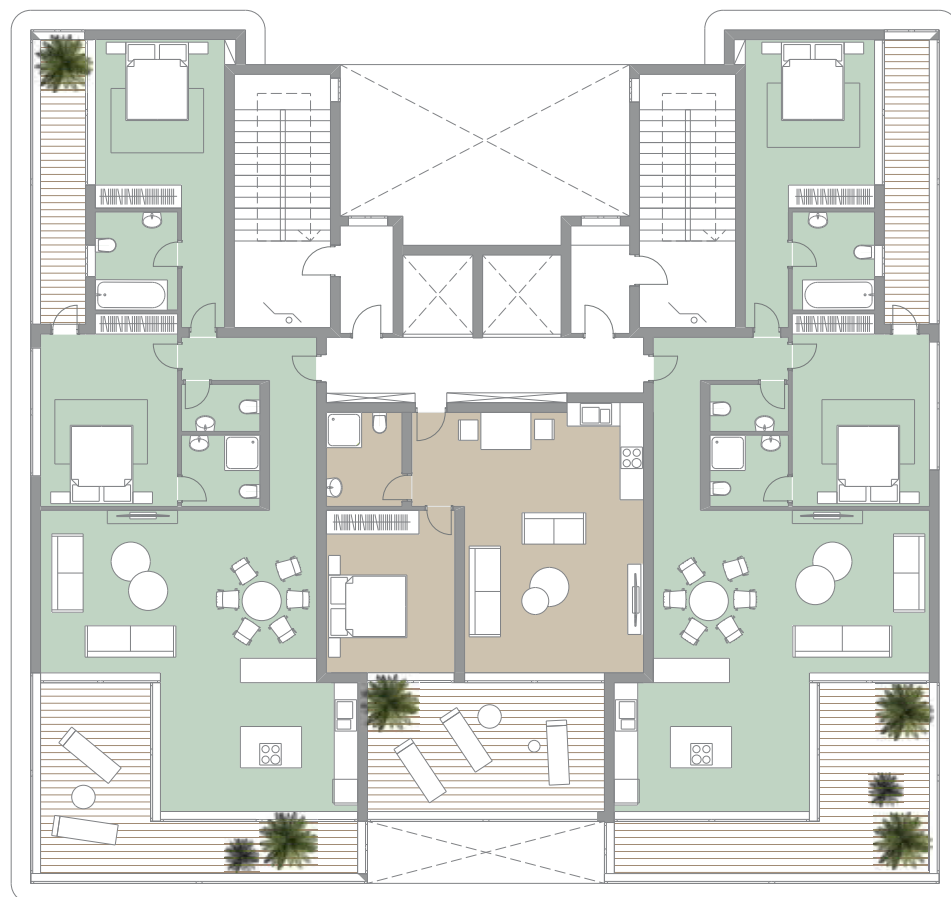


SIGNATURE

## FLOOR PLAN 3-9

1 Bedroom **102 m<sup>2</sup>**

2 Bedroom **195 m<sup>2</sup>**



roof terrace 15

level 14

level 13

level 12

level 11

level 10

level 9

level 8

level 7

level 6

level 5

level 4

level 3

level 2

level 0/1

level -1

SPA  
and swimming pool

BASEMENT

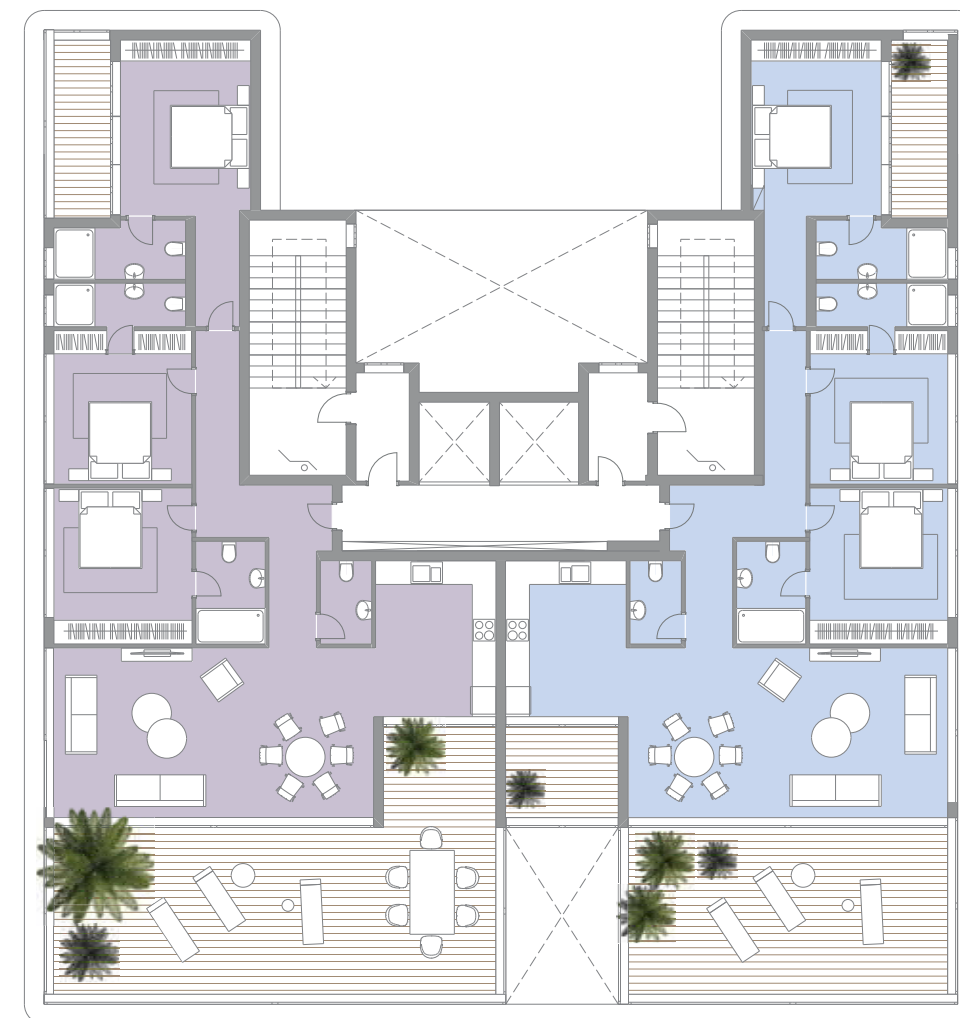


SIGNATURE

## FLOOR PLAN 10-12

3 Bedroom A type **254 m<sup>2</sup>**

3 Bedroom B type **281 m<sup>2</sup>**





roof terrace 15

level 14

level 13

level 12

level 11

level 10

level 9

level 8

level 7

level 6

level 5

level 4

level 3

level 2

level 0/1

level -1

SPA  
and swimming pool

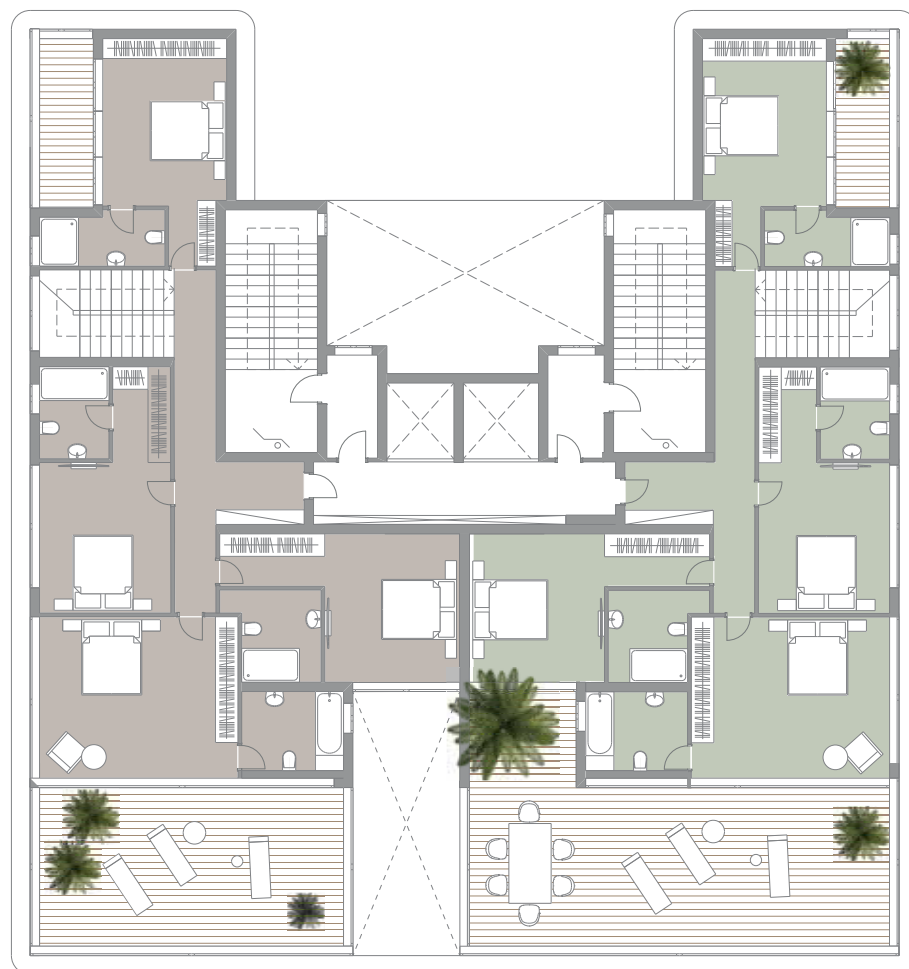
BASEMENT



## PENTHOUSE Floor 13

Penthouse A type 426 m<sup>2</sup>

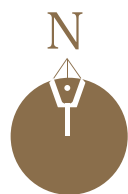
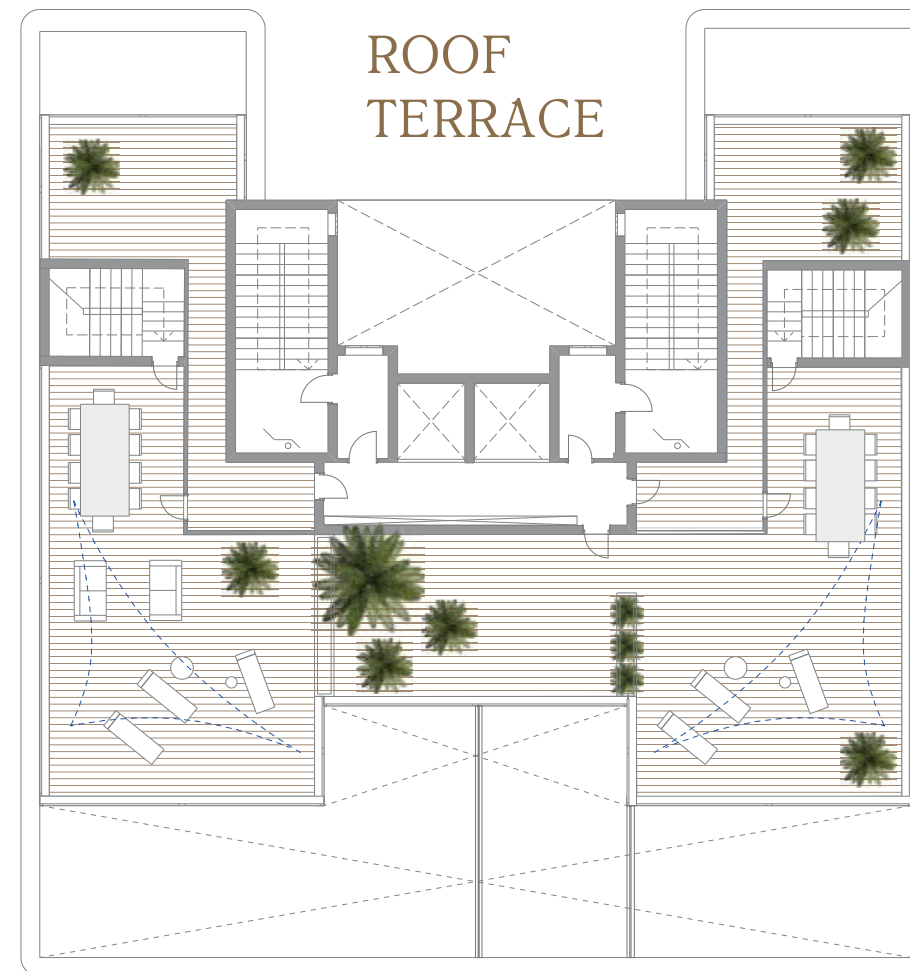
Penthouse B type 446 m<sup>2</sup>



## PENTHOUSE Floor 14



## ROOF TERRACE







Established in 2002, the company has rapidly grown to become one of the largest developers on the island, offering award-winning and innovative residential and commercial properties in prime locations across Limassol.

Today Property Gallery is engaged in the construction of over 40 projects. Property Gallery's stellar reputation in the industry has been recognized, garnering 35 International Property Awards.

We offer clients beachside projects for residential, commercial and mixed use, and are proud to deliver solid and consistent business investments to property buyers from all corners of the world.

We take great care in choosing our projects and are constantly on the lookout for new and innovative ideas. We select the best locations and apply the most precise building techniques to ensure complete success for every project.

Finally, our company proudly guarantees maximum quality in all the projects we undertake, from the foundation and construction materials, to the electric appliances, furniture, and other finishes required for the completion of a quality construction.







# PROPERTY GALLERY

Building Connections.

1 Georgiou A', Monastiraki center,  
Offices 3/4/5, Limassol 4040, Cyprus  
Free Local Calls: +8000 83 84



International Phone: +357 25 73 1111  
E-mail: [sales@cypruspropertygallery.com](mailto:sales@cypruspropertygallery.com)  
[www.cypruspropertygallery.com](http://www.cypruspropertygallery.com)